



B.K. BIRLA CENTRE FOR EDUCATION

SARALA BIRLA GROUP OF SCHOOLS
A CBSE DAY-CUM-BOYS' RESIDENTIAL SCHOOL



POST MID-TERM EXAMINATION 2025-26

COMPUTER APPLICATION

Class : IX
Date : 07-01-2026
Admission No.:

Duration : 1 Hr
Max. Marks : 25
Roll No.:

MARKING SCHEME

SECTION A — (1 mark each)

1. d) All the above
2. a) Bendix
3. 3) Multi-tasking
4. b) Operating System
5. c) Local Area Network
6. c) WAN
7. d) Each user of the network can access files more easily
8. d) Unguided media
9. b) Padlock
10. a) Trojan Horse
11. b) Anti-Virus software
12. b) To prevent unauthorised connections coming into and out of a network
13. b) The prefix of the website is **https**

SECTION B — (2 marks each)

14. What is an Operating System? What are its functions?

Answer:

An Operating System (OS) is system software that manages the computer hardware and provides a platform for running application programs.

Functions of OS:

1. Manages memory, files, and devices
2. Controls processes and multitasking
3. Provides user interface
4. Ensures security and access control

15. What is a network? Why is it needed?

Answer:

A **network** is a group of interconnected computers and devices that share resources and information.

Need for a network:

1. To share files, data, and resources
2. To enable communication between users
3. To share hardware like printers
4. To enable centralized data storage and management

16. What are cookies? How are they used by websites to track you?

Answer:

Cookies are small text files stored by a website on the user's browser.

How they track you:

- They store information such as login details, preferences, or browsing activity.
- Websites use cookies to identify returning users, personalize content, and track browsing behaviour for analytics or ads.

SECTION C — (3 marks each)

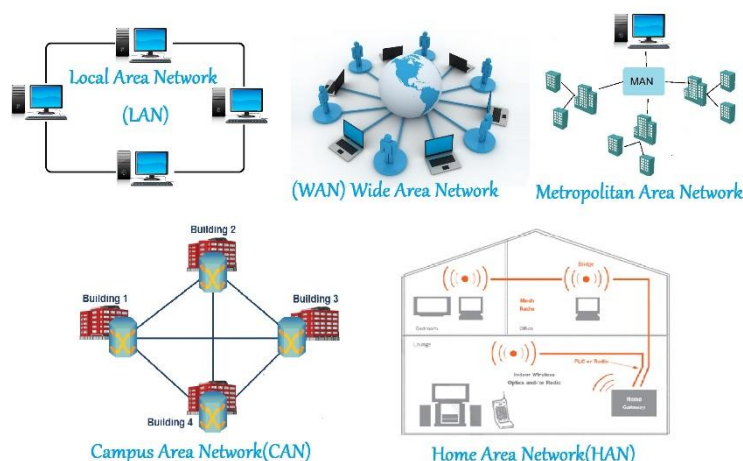
17. Name the different types of computer networks. Explain each type with diagram.

Types of Networks:

1. **LAN (Local Area Network)** – Covers a small area like a home, school, or office.
2. **MAN (Metropolitan Area Network)** – Covers a city or large campus.
3. **WAN (Wide Area Network)** – Covers a very large area; the Internet is the biggest WAN.

Simple diagrams (acceptable in exam):

LAN , MAN, WAN:



18. What is a computer virus? Give examples. How can it affect your computer?

Answer:

A **computer virus** is a malicious program that attaches itself to files or software and spreads to other systems.

Examples:

- Trojan Horse
- Worm
- Ransomware
- Macro virus

Effects of viruses:

1. Slows down the computer
2. Deletes or corrupts files
3. Steals personal information
4. Damages software or crashes the system

***** ALL THE BEST *****